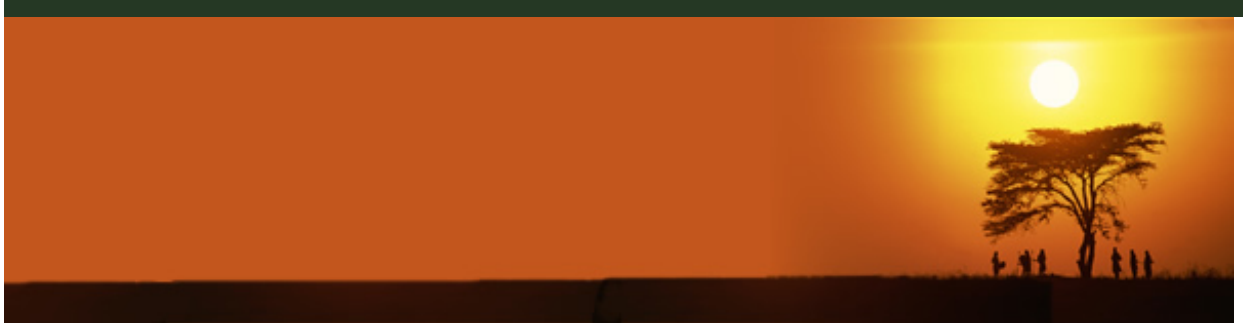




LEMUR CONSERVATION FOUNDATION

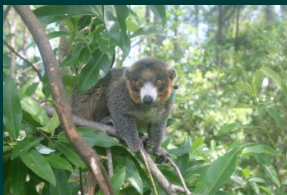


LEMUR LATITUDES

e-newsletter

February 2013

DONATE
NOW



Learn more about the **Mongoose Lemurs** at the LCF Myakka City Lemur Reserve.

READ MORE
about our lemur colony



ATTENTION CHOC-A-HOLIC LEMUR LOVERS!

Or are we Lemur-holic chocolate lovers?

Our friends at Madecasse Chocolate had a great 2012, when the United Nations recognized their efforts in Madagascar. Madecasse was recently named one of the 50 most innovative

Quick Links

visit our web site

www.lemurreserve.org

visit our Amazon
webstore:

[LCF Malagasy Lemur
Shop](#)

[Follow Us On
Facebook](#)

companies in the world. Here is a special Valentine's Day offer from a great company we're so happy to support!

'We're sharing the love with our awesome fans and supporters (aka: you) this week with 15% OFF all online orders now through Valentine's Day. To activate, type the code 13vday15 in the promo box at checkout.'

'Madécasse's favorite V-Day couple: Coffee & Chocolate. It was love at first taste. The crunch of locally-roasted Madagascar espresso beans, shade-grown and cultivated in the far-removed highlands of the island plateau, matched perfectly with our 44% cocoa milk chocolate's strong caramel notes and silky texture.'

'It's no wonder we sell out of **Arabica Coffee chocolate bars** any time we sample them out! Now's it's your turn to play matchmaker for **the chocophile or coffee lover** in your life - 1 - 2.64oz bar, \$5.99.'

'Plenty more gift ideas and products to choose from online! **Visit our web store today** and take advantage of 15% OFF to share with your sweetheart -- or just for you!'

*online ordering available only in the US. Minimum order of \$17 applies for all orders made online.

<http://madecasse.com/>

Enjoy, knowing we're doing a truly good deed when we indulge in Madecasse Chocolate!

RESEARCH AT THE RESERVE

Dr. Lauren Highfill, Eckerd College, will continue her study on personality traits in lemurs this year at the Myakka City Lemur Reserve. With the help of two Eckerd students, Ashley Chambers and Christine Dumbleton, they will continue to observe the lemurs during normal daily activity and during



training sessions to code the personality traits of the lemurs. The students will also present the lemurs with various food baited puzzle boxes to test the lemurs' learning rates and problem-solving abilities.

Animal personality research offers a number of both practical and theoretical benefits. Examining individual differences enables animal caretakers to better understand and predict the behavior of animals. Moreover, understanding individual differences can directly benefit the animals. Zoos and reserves can more effectively manage animals and maintain their welfare if they can consider the specific characteristics of the individuals.

For example, ensuring inter-individual compatibility in group housing may serve to ensure the safety of the whole group. Knowledge of personality types can aid in a variety of animal

management techniques, such as breeding and reintroduction programs. Dr. Highfill's recent research with small-eared bushbabies indicated that personality measures could be used as a tool for evaluating the effectiveness of environmental enrichment plans for individual animals. This study examined the relationship between personality traits and reduced stereotypy after five different enrichment interventions in small-eared bushbabies. Her results indicated that some enrichment interventions were better suited for certain personality types.

To date, the personality traits of lemurs have not been extensively studied. A better understanding of personality traits in captive lemurs could be extremely beneficial to husbandry staff. As mentioned above, understanding personality can aid in a number of husbandry procedures, such as reducing conflict among group members and individualizing environmental enrichment interventions.

We are happy to have Dr. Highfill and her students join us at the reserve for another year and we look forward to compiling and interpreting the results.

- Patricia Walsh, LCF Director of Research and Operations



'THE COMFORT BRANCH'

The Lemur Conservation Foundation participates in several Species Survival Plans through breeding programs. Uniquely, our reserve in Myakka City provides free-ranging forest habitat for several species of lemurs. One challenge faced by reserves and zoos is creating habitat that provides animals with an optimal environment for their health and comfort.

The 'Comfort Branch' is a thermo-regulation prototype designed for the forest at LCF's Myakka City Reserve. It helps maintain correct temperature through innovative use of higher performance solar cells thermo-electric cooling elements in a naturalistic 'branch' installed in the forests. The project is developed for LCF by Clay Nesler, with funding from Shell Corporation and patent contributions by Johnson Controls. Mr. Nesler is a part-time Florida Gulf Coast resident, VP for Global Energy and Sustainability at Johnson Controls, and Alumni Board Member at the University of Illinois Urbana - Champaign School of Engineering.

The prototype will be installed in the Toomey Forest, home to mongoose, ring-tailed, and red ruffed lemurs. After testing at the reserve, Comfort Branch kits will be available for purchase by other facilities, making the Comfort Branch both an innovation in animal management, a renewable project with respect to the environment, and, upon completion of our field test, a sustainable revenue source for LCF.



36-HOUR GIVING CHALLENGE
Unleash your inner generosity
MARCH 5 AT 7 AM – MARCH 6 AT 7 PM

LCF is participating in the 36-HOUR GIVING CHALLENGE for the first time! From 7am on March 5 through 7pm on March 6 the Giving Challenge will give you the opportunity to show your support for our lemurs, and help us provide important conservation education resources in our community.

THE POWER OF 36 at LCF means that

A \$36 gift will provide one set of AKO PROJECT Teacher Resources to children with learning challenges. LCF will distribute over 800 sets of teacher resources through programs like Inner City-Inner Child and Jump Start.

Every \$360 gift will provide resources like 3 stationery battery powered cameras for nocturnal observation in our forests, a 100X Microscope, or digital notepads for Field Training School.

When you donate \$3,600, you provide 50% of the funding necessary for the 'Comfort Branch' or a Dome Habitat for lemurs free-ranging in the forest enclosures. ***READ MORE about how the domes helped our dedicated keepers manage an event like Hurricane Isaac.***

The Community Foundation of Sarasota County and The Gulf Coast Foundation partner with GuideStar to bring this opportunity to our community. There will be matching funds available, and special awards for nonprofits who meet benchmarks like earning the most 'new money' through this campaign.

Learn more at the ***Community Foundation of Sarasota County***

Mark your calendar for March 5& 6, and set your alarm clock for 6:55am...The 36-Hour Giving Challenge starts at 7!

If you would like to donate to LCF through the 36-Hour Giving Challenge call or email us to make your pledge of support.

We'll get up early for you!

941-322-8494

leenesler@lemurreserve.org

HAPPY VALENTINE'S DAY

From Fred and the LCF team! Thanks to everyone who asks for updates about Fred's health. You'll be happy to know that he is doing well now. He is adjusting to his medications and life out of the forest. Fred is now living with some other lemurs who cannot free-range in the forest because of age, infirmity, or other reasons, like those that were kept as pets.



Contact Info:

Executive Director & CEO

Lee Nesler

941-322-8494